

Chart Search Clinical

Search the chart for cholangitis

Search the chart for social work

Search the chart for dysplasia

Search the chart for neuropathy

Search the chart for home health

Search the chart for fracture

Search the chart for prior auth

Search the chart for prior authorization

Search the chart for vitamin d

Search the chart for atrial fibrillation

Search the chart for nephrology

Search the chart for respiratory failure

Search the chart for vedo

Search the chart for losartan

Search the chart for dimer

Search the chart for ivig

Search the chart for diarrhea

Search the chart for LIVER

Search the chart for psych

Search the chart for gerd

Search the chart for tb

Search the chart for tuberculosis

Search the chart for tobacco

Search the chart for b12

Search the chart for pulmonary embolism

Search the chart for notes

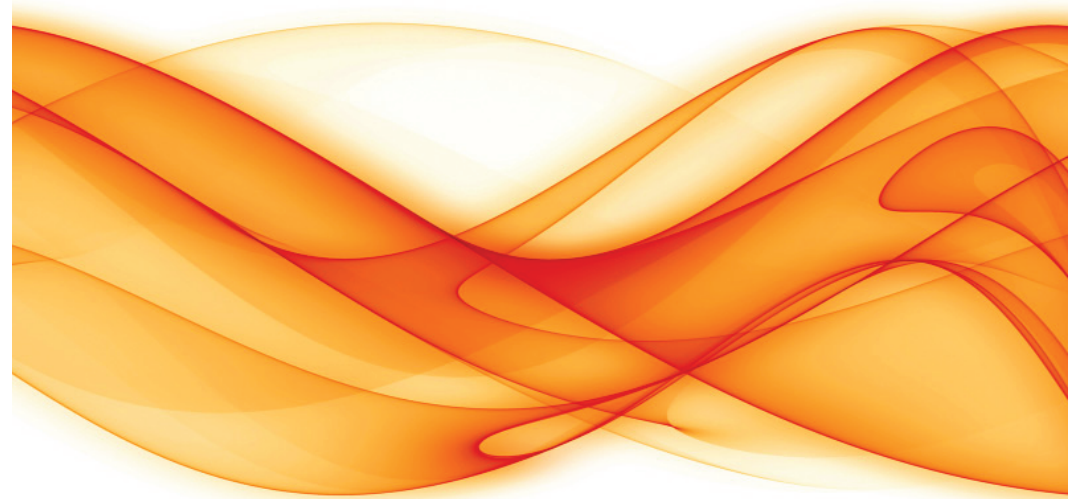
Search the chart for transfer

Search the chart for port

Search the chart for foot

Search the chart for labs

Search the chart for bayley



EpicCare Ambulatory Voice Commands

Search the chart for hyper

Search the chart for lasix

Search the chart for entyvio

Search the chart for occult

Search the chart for spirometry

Search the chart for foot exam

Search the chart for EKG

Search the chart for ECG

**Search the chart for
Electrocardiogram**

Search the chart for ulcer

Search the chart for albumin

Search the chart for tramadol

Search the chart for comfort care

Search the chart for failure

Search the chart for bactrim

Search the chart for psc

Search the chart for primary

sclerosing cholangitis

Search the chart for transplant

Search the chart for amlodipine

Search the chart for infection

Search the chart for neurology

Search the chart for op note

Search the chart for metac

Search the chart for metastasis

Search the chart for nutrition

Search the chart for physical therapy

Search the chart for survivorship

Search the chart for thyroid

Search the chart for humira

Search the chart for plavix

Search the chart for dementia

Search the chart for facesheet

Search the chart for metastatic

Chart Search Clinical

| |
|--|
| Search the chart for comfort |
| Search the chart for psa |
| Search the chart for prostate specific antigen |
| Search the chart for vancomycin |
| Search the chart for aki |
| Search the chart for acute kidney injury |
| Search the chart for cad |
| Search the chart for coronary artery disease |
| Search the chart for calcification |
| Search the chart for metoprolol |
| Search the chart for obesity |
| Search the chart for fall |
| Search the chart for afib |
| Search the chart for cardiac rehab |
| Search the chart for Imp |

| |
|--|
| Search the chart for last menstrual period |
| Search the chart for pacemaker |
| Search the chart for ectatic |
| Search the chart for egd |
| Search the chart for egd scope |
| Search the chart for nirs |
| Search the chart for atherosclerotic |
| Search the chart for pain |
| Search the chart for lovenox |
| Search the chart for hysterectomy |
| Search the chart for heparin |
| Search the chart for foley |
| Search the chart for Psychiatry |
| Search the chart for anxiety |
| Search the chart for inr |
| Search the chart for biopsy |
| Search the chart for diet |

Contents

| | |
|-------------------------------|----|
| General Hyperspace | 6 |
| SmartTools | 7 |
| In Basket | 8 |
| Communication Management..... | 9 |
| Level of Service..... | 10 |
| Preference List..... | 11 |
| Schedule | 11 |
| SmartLinks | 12 |
| SmartPhrases | 13 |
| Chart Search Clinical..... | 14 |

General Hyperspace

| | | | |
|--|---|--|--|
| Click Accept Click the Accept button | Jump to Anticoagulation | Search the chart for tetanus | Search the chart for sleep |
| Click Cancel Click the Cancel button | Jump to Assign Bedside Questionnaires | Search the chart for insurance | Search the chart for hepatitis |
| Click Print Open the Print Menu | Jump to Assign Patient Questionnaires | Search the chart for ckd | Search the chart for ectasia |
| Click Print AVS Click the Print AVS button in the Wrap-Up or the Schedule activities | Jump to Asthma Action Plan | Search the chart for chronic kidney disease | Search the chart for child |
| Click Sign Orders Click the Sign Orders button | Jump to Care Paths | Search the chart for picc | Search the chart for surgery |
| Click the Magnifying Glass | Jump to Care Teams | Search the chart for picc line | Search the chart for annual |
| Close the Chart Close the current workspace/chart | Jump to Charges | Search the chart for shock | Search the chart for pap smear |
| Close the Encounter Close the current encounter | Jump to Chart Completion | Search the chart for EEG | Search the chart for spine |
| Close the Sidebar Close the sidebar activity | Jump to Chart Review | Search the chart for Electroencephalogram | Search the chart for consent |
| Close the Workspace Close the current workspace | Jump to Chronic Care Management Enrollment | Search the chart for PPD | Search the chart for encephalopathy |
| Exit Hyperspace Exit Hyperspace completely | Jump to Demographics | Search the chart for CPAP | Search the chart for eyeSearch the chart for tortuosity |
| Jump to Admission | Jump to Diagnosis | Search the chart for CPAP machine | Search the chart for pathology |
| Jump to Advance Care Planning | Jump to Diagnostic Testing | Search the chart for atherosclerosis | Search the chart for sleep study |
| | Jump to Discharge | Search the chart for cath | Search the chart for urology |
| | Jump to Document List | Search the chart for cardiac catheter | Search the chart for bleed |
| | Jump to E-Consult | Search the chart for ecog | Search the chart for atorvastatin |
| | Jump to Education | | Search the chart for transfusion |

Chart Search Clinical

Search the chart for Urinary Tract Infection

Search the chart for breast

Search the chart for gabapentin

Search the chart for fatty

Search the chart for brca

Search the chart for face to face

Search the chart for hiv

Search the chart for NYHA

Search the chart for New York Heart Association

Search the chart for chemo

Search the chart for amylase bf

Search the chart for amylase body fluid

Search the chart for mrsa
Search the chart for palliative

Search the chart for discharge summary

Search the chart for MRI

Search the chart for seizure

Search the chart for diagnostic

Search the chart for eminence

Search the chart for family history

Search the chart for stent

Search the chart for tortuous

Search the chart for creatinine

Search the chart for lipid

Search the chart for dnr

Search the chart for do not resuscitate

Search the chart for CURES

Search the chart for genetics

Search the chart for heart failure

Search the chart for septic shock

Search the chart for ETOH

Search the chart for ethanol

Search the chart for anticoagulant

Search the chart for tdap

Jump to Enter Edit Results

Jump to Episodes of Care

Jump to Finish Order Reconciliation

Jump to Flowsheets

Jump to Follow-Up

Jump to FYI

Jump to Genomic Indicators

Jump to Growth Chart

Jump to Health Maintenance

Jump to Hearing Vision

Jump to History

Jump to Images

Jump to Immunizations

Jump to Implants

Jump to Intake Output

Jump to Level of Service
Jump to Level Of Service section

Jump to LOS
Jump to Level Of Service section

Jump to Mark All as Reviewed

Jump to Media Manager

Jump to Meds and Orders

Jump to MyChart Administration

Jump to MyChart Patient Message Review

Jump to MyChart Proxy Access

Jump to MyChart Results Release

Jump to MyChart Ticket Scheduling

Jump to Notes

Jump to OB Tools

Jump to Order Review

Jump to Orders for Admission

Jump to Patient Instructions

Jump to Plan

Jump to Pre-Charting

Jump to Prep for Procedure

Jump to Problem List

General Hyperspace

Jump to Quick Abstraction

Jump to References

Click the References button on the Wrap-Up tab

Jump to Remind Me

Create Remind Me In Basket message

Jump to Request Outside Records

Jump to Results Review

Jump to Screenings

Jump to Sepsis

Jump to SmartSets

Jump to SnapShot

Jump to Status Board

Jump to Summary

Jump to Synopsis

Jump to the Next Activity

Jump to next activity (down) in activity list

Jump to the Previous Activity

Jump to previous activity (up) in activity list

Jump to the Next Workspace

Jump to next workspace (right)

Jump to the Previous Workspace

Jump to previous workspace (left)

Jump to the First Home Tab

Jump to the Second Home Tab

Jump to the Third Home Tab

Jump to the Fourth Home Tab

Jump to the First Sidebar Tab

Jump to the Second Sidebar Tab

Jump to the Third Sidebar Tab

Jump to the Fourth Sidebar Tab

Jump to Therapy Plan

Jump to Transfer

Jump to Visit Diagnosis

Jump to Wrap-Up

Launch MyChart Home Page

Log Out

Log out of Hyperspace

Move the Floating Window to the Sidebar

Takes a floating window and puts it back into the Sidebar

Search the chart for warfarin

Search the chart for dvt

Search the chart for deep vein thrombosis

Search the chart for edema

Search the chart for depression

Search the chart for smoke

Search the chart for cirrhosis

Search the chart for insulin

Search the chart for dialysis

Search the chart for TSH

Search the chart for Thyroid Stimulating Hormone

Search the chart for dexa

Search the chart for dexa scan

Search the chart for aspirin

Search the chart for severe sepsis

Search the chart for genetic

Search the chart for pft

Search the chart for pulmonary function test

Search the chart for oxygen

Search the chart for discharge

Search the chart for pneumonia

Search the chart for hypertension

Search the chart for stroke

Search the chart for asthma

Search the chart for tibial spine

Search the chart for Ascites

Search the chart for cardiology

Search the chart for Prednisone

Search the chart for smoking

Search the chart for metformin

Search the chart for lisinopril

Search the chart for UTI

Chart Search Clinical

Search the chart for colonoscopy

Search the chart for bmi

Search the chart for body mass index

Search the chart for colon

Search the chart for diabetes

Search the chart for mammo

Search the chart for pap

Search the chart for sepsis

Search the chart for a1c

Search the chart for hemoglobin a1c

Search the chart for weight

Search the chart for alcohol

Search the chart for eye exam

Search the chart for medicare

Search the chart for mammogram

Search the chart for height

Search the chart for donor

Search the chart for steatosis
Search the chart for copd

Search the chart for chronic
obstructive pulmonary disease

Search the chart for CHF

Search the chart for congestive heart
failure

Search the chart for malnutrition

Search the chart for stage

Search the chart for hba1c

Search the chart for statin

Search the chart for echo

Search the chart for echocardiogram

Search the chart for cancer

Search the chart for anemia

Search the chart for hospice

Search the chart for kg

Search the chart for kilogram

Search the chart for radiation

Move the Sidebar to a Floating Window

Moves the active Sidebar activity to a floating window

Move the Sidebar to the Main Pane

Jump to the first sidebar tab

Open the Sidebar

Open the sidebar activity

Print Now

Open the Print Menu

Secure Hyperspace

Secure the Hyperspace session

Send Multi-Patient Message

Send Patient Message

Sign the Visit

View keyboard shortcuts

View the Navigator Hotkeys menu

SmartTools

Go to Encounter Matches

Go to the Encounter Matches tab on SmartText Selection form

Go to Favorites

Go to the Favorites tab on SmartText Selection form or in Letter Templates section of Letters activity

Go to Next List

Go to the next SmartList or wildcard

Go to Previous List

Go to the previous SmartList or wildcard

List My Phrases

Show a list of My SmartPhrases

List Phrases

Show a list of SmartPhrases and SmartLinks

Magnify Field

In Basket

Attach In Basket

Opens the Attach In Basket Activity

Done Message

Mark the highlighted In Basket message as done

Edit Pools

Opens Pools in In Basket Activity

Manage QuickActions

Launches the QuickAction manager

New Patient Message

Creates a new secure patient message from the In Basket

Next Folder

Go to the next folder (down) in In Basket folder list

Next In Basket View

Move to the next In Basket view

Next Message

Go to the next message (down) in In Basket message list.

Postpone Message

Launches the Postpone form

Previous Folder

Go to the previous folder (up) in In Basket folder list.

Previous In Basket View

Move to the previous In Basket view

Previous Message

Go to the previous message (up) in In Basket message list.

Refresh In Basket

Refresh the In Basket message display.

Resize Display

Toggle the size of the In Basket message display window.

Search Messages

Opens message search in In Basket Activity

SmartPhrases

Insert Attestation

Insert the attestation statement SmartPhrase

Insert Female Exam

Insert the normal female exam SmartPhrase

Insert Female Exam By System

Insert the normal female exam - choose systems reviewed SmartPhrase

Insert HPI Anxiety

Insert the HPI template for anxiety

Insert Last BUN

Insert the last BUN result

Insert Last CBC

Insert the last CBC results (WBC, HGB, HCT, MCV, and PLT)

Insert Last Creatinine

Insert the last creatinine result

Insert Last Diabetes

Insert the last three HGB A1C results, and last glucose fasting, microalbumin, LDL, and creatinine results

Insert Last Electrolytes

Insert the last electrolyte results (Na, K, Cl, and CO2)

Insert Last ESR

Insert the last ESR result

Insert Last HBA1C

Insert the last hemoglobin A1C result

Insert Last Hemoglobin

Insert the last hemoglobin results

Insert Last INR

Insert the past three INR results

Insert Last Lipids

Insert the last three lipid results

Insert Last Lithium

Insert the last lithium results (Na, BUN, Creat, TSH, and WBC)

Insert Last Liver Function

Insert the last liver function test results

Insert Last Platelets

Insert the last platelet count

Insert Last Rheumatology

Insert the last three rheumatology results

Insert Last TSH

Insert the last TSH result

Insert Male Exam

Insert the normal male exam SmartPhrase

Insert Male Exam By System

Insert the normal male exam - choose systems reviewed SmartPhrase

SmartLinks

Insert Blood Pressure

Insert blood pressure from the current encounter

Insert Care Team

Insert the care team

Insert Chemistry Results

Insert the most recent chemistry lab results

Insert Chief Complaint

Insert the encounter chief complaint(s)

Insert Diagnoses

Insert encounter diagnoses

Insert HPI

Insert a list of HPI templates, organized by specialty

Insert Last Visit Results

Insert results from the most recent visit (not the current visit)

Insert Problem Notes

Insert problem-oriented charting notes

Insert Referring Provider

Insert the referring provider's name

Insert This Visit Results

Insert results from this visit, and if none are available, show results from most recent visit

Insert Vitals

Insert vital signs

Communication Management

Add All Referring Providers

Adds all referring providers as recipients for letter

Add Care Team

Adds patient's care team as recipient for letter

Add Last Provider

Adds last provider as recipient for letter

Add Patient

Adds patient as recipient for letter

Add PCP

Adds patient's primary care physician as recipient for letter

Add Previous

Adds previous provider as recipient for letter

Add Referring Provider

Adds referring provider as recipient for letter

Create New Communication

Create new communication

Pend Letter

Pend communication

Preview Letter

Preview communication

Send Letter Now

Send letter now

Send Letter Upon Closing Encounter

Sends letter when encounter is closed

Level of Service

Enter LOS Consult 2

Enter a Level of Service (E&M code) of 99242

Enter LOS Consult 3

Enter a Level of Service (E&M code) of 99243

Enter LOS Consult 4

Enter a Level of Service (E&M code) of 99244

Enter LOS Consult 5

Enter a Level of Service (E&M code) of 99245

Enter LOS Established 1

Enter a Level of Service (E&M code) of 99211

Enter LOS Established 2

Enter a Level of Service (E&M code) of 99212

Enter LOS Established 3

Enter a Level of Service (E&M code) of 99213

Enter LOS Established 4

Enter a Level of Service (E&M code) of 99214

Enter LOS Established 5

Enter a Level of Service (E&M code) of 99215

Enter LOS New 1

Enter a Level of Service (E&M code) of 99201

Enter LOS New 2

Enter a Level of Service (E&M code) of 99202

Enter LOS New 3

Enter a Level of Service (E&M code) of 99203

Enter LOS New 4

Enter a Level of Service (E&M code) of 99204

Enter LOS New 5

Enter a Level of Service (E&M code) of 99205

Preference List

Clear Selected

Click the Clear Selected button in the Preference List Browser

Click Search

Click the Search button in the Preference List Browser

Click Select and Stay

Click the Select & Stay button in the Preference List Browser

Jump to Browse Tab

Click the Browse tab in the Preference List Browser

Jump to Database Lookup Tab

Click the Database Lookup tab in the Preference List Browser

Jump to Facility List Tab

Click the Facility List tab in the Preference List Browser

Jump to Preference List Tab

Click the Preference List tab in the Preference List Browser

Only Show Favorites

Check or uncheck the Only Favorites on Browse tab in the Preference List Browser

Open Browse Window in Meds and Orders

Open the Browse window in Meds & Orders

Schedule

Click Chart

Click the Chart button in the Schedule activity

Click Encounter Summary

Click the Encounter Summary button in the Schedule activity

Click Print After Visit Summary

Print AVS from schedule

Click Sign Encounter

Click the Sign Encounter button in the Schedule activity
