

# Water System

## DESCRIPTION

The water system is a self-contained system with a 100 gallon fresh water supply tank located in the front compartment in the center of the unit.

The fresh water tank inlet connection is located inside the #2 roadside belly box and is a U.S. standard outside water spigot connection or garden hose connection. Connect supply to this inlet connection to fill the on board water tank for use with the pumps.

## **OR**

The same standard garden hose connection is used to supply water to the unit and bypass the fresh water tank and the pumps by turning off the tank fill switch inside the #2 roadside belly box.

The unit is equipped with a solenoid valve and float to ensure proper water level in the fresh water tank.

The fifty-four (54) gallon gray water tank dump gate and the fifty-four (54) gallon black water dump gate are located inside the roadside compartments #4 and #6 belly box respectively. (Refer to Section 3, Pages 18 Paragraph 17).

## **SANITIZING THE FRESH WATER SYSTEM**

The recommended procedure for sanitizing the fresh water system is:

1. Preparation of a chlorine solution using one gallon of water and one-fourth ( $\frac{1}{4}$ ) cup of Clorox™ or Purex™ household bleach (five percent sodium hypochlorite solution). Pour one gallon of the prepared solution into the fresh water tank for each 15 gallons of tank capacity.
2. Complete filling of the fresh water tank with fresh water. Open each faucet and drain cock until all air has been released from the pipes and entire system is filled.
3. Allow the solution to stand for three hours.
4. Drain and flush the tank with potable fresh water.
5. To remove any excessive chlorine taste or odor which may remain, fill the tank with fresh water and allow it to stand for one hour.

**NOTE:** For optimum results a carbon type water purifier should be used.

6. Drain the tank and flush it again with potable water.
7. This procedure should be completed monthly.

## **DUMPING GREY AND BLACK WATER TANKS**

1. The manual dump valves, located in the #2, #4, and #6 belly boxes, are fitted with extruded pins that allow the attachment of a flexible holding-tank discharge hose. Connect the other end of the discharge hose to a four inch (4") pipe in a dump station or a sanitary sewer hook-up.
2. To properly dump the holding tanks, the black water should be evacuated first. After the black water tank finishes draining, the gray water tank should be emptied. This allows the gray water to rinse the hose.
3. When hooked up to a sanitary sewer line, the black water holding tank should remain closed until the tank is at least three-quarters full. The tank cannot be flushed properly unless there is a sufficient amount of material to gravity-flow from the tank. Additionally, unless the tank has sufficient water to cover the solid waste, odor control may be a problem. After dumping the black water holding tank, it should be filled with fresh water and dumped again to completely clean the tank.
4. To eliminate offensive odors, chemicals must be used in the black water holding tank. Normally the tank is charged with a dose of toilet chemicals following the dumping procedure. During hot summer days, application of additional chemicals may be necessary. Products are also available to freshen gray water holding tanks. Refer to Section 7, Page 2 for instructions.
5. Many municipalities require that biodegradable chemicals, devoid of formaldehyde, be used. Therefore, a wide variety of environmentally safe chemicals is available and their use is recommended.
6. Although it is not absolutely necessary, it is advisable to use single-ply, white toilet paper in all holding-tank type toilets. Not only is the bulk limited because the paper is thin, but it also tends to break down faster, which is easier on the plumbing system, especially the termination valves.

**TOILET**

Please refer to the manufacturer's manual in the Appendix portion of this manual for the operation, maintenance, and distributors of this toilet.

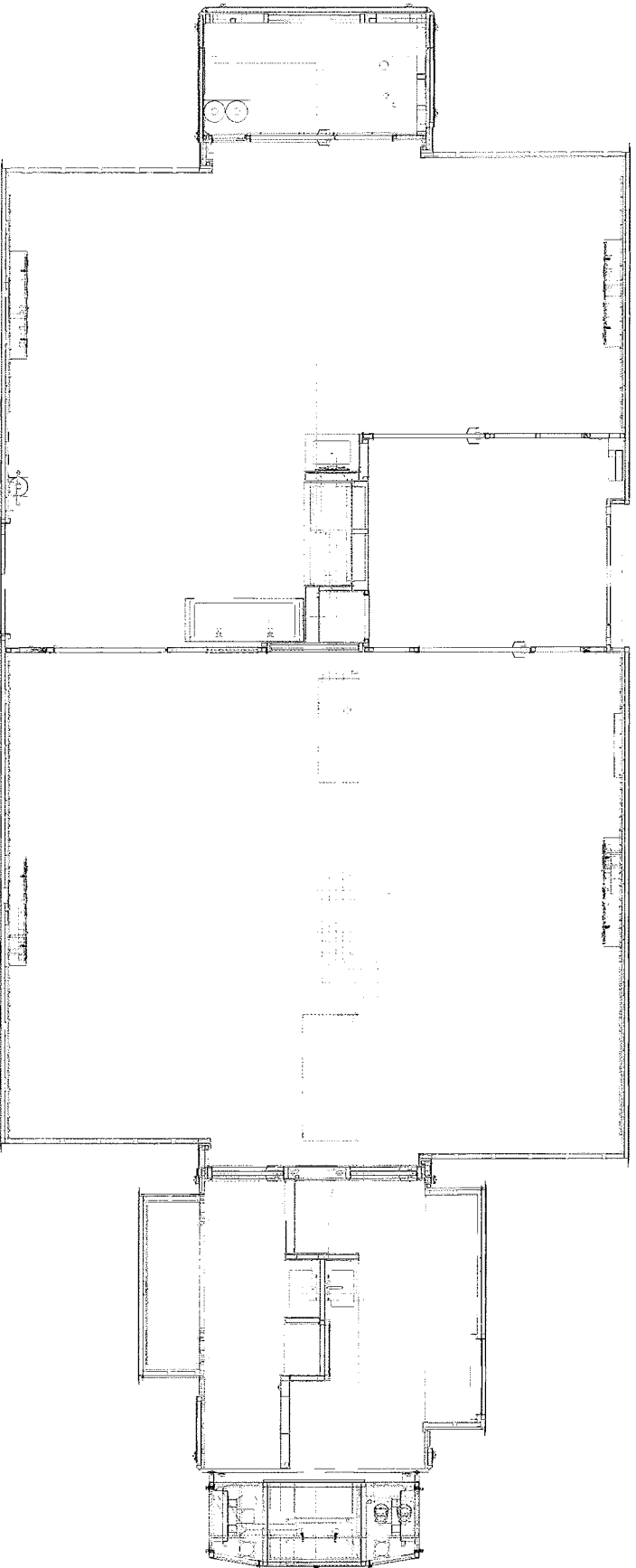
### **WATER HEATER**

There is one (1) 8 gallon Ariston water heater on this unit located under the sink in the Soiled Utility Room. The second water heater is a 12 gallon Bradford White Energy Saver and is located under the nurses station in the Pre-op/Post-op area. Please refer to the manufacturer's manual for additional information.

### **SCRUB SINK AND INFRARED FAUCET**

Please refer to the manufacturers' manuals for information regarding maintenance, parts, etc.

The scrub sink is a roll-around sink that is located against the wall between the bathroom door in the corner of the Pre-op/Post-op area. The connections are NPT connections that are permanent attachments that hook up to the hot and cold running water. The drainage pipes need to be connected when scrub sink is in operational position and disconnected when sink is in transport position. There is also a 110 Volt outlet on the same wall that provides electricity to the faucet. The sink turns 90 degrees for positioning in either transport or operational mode.



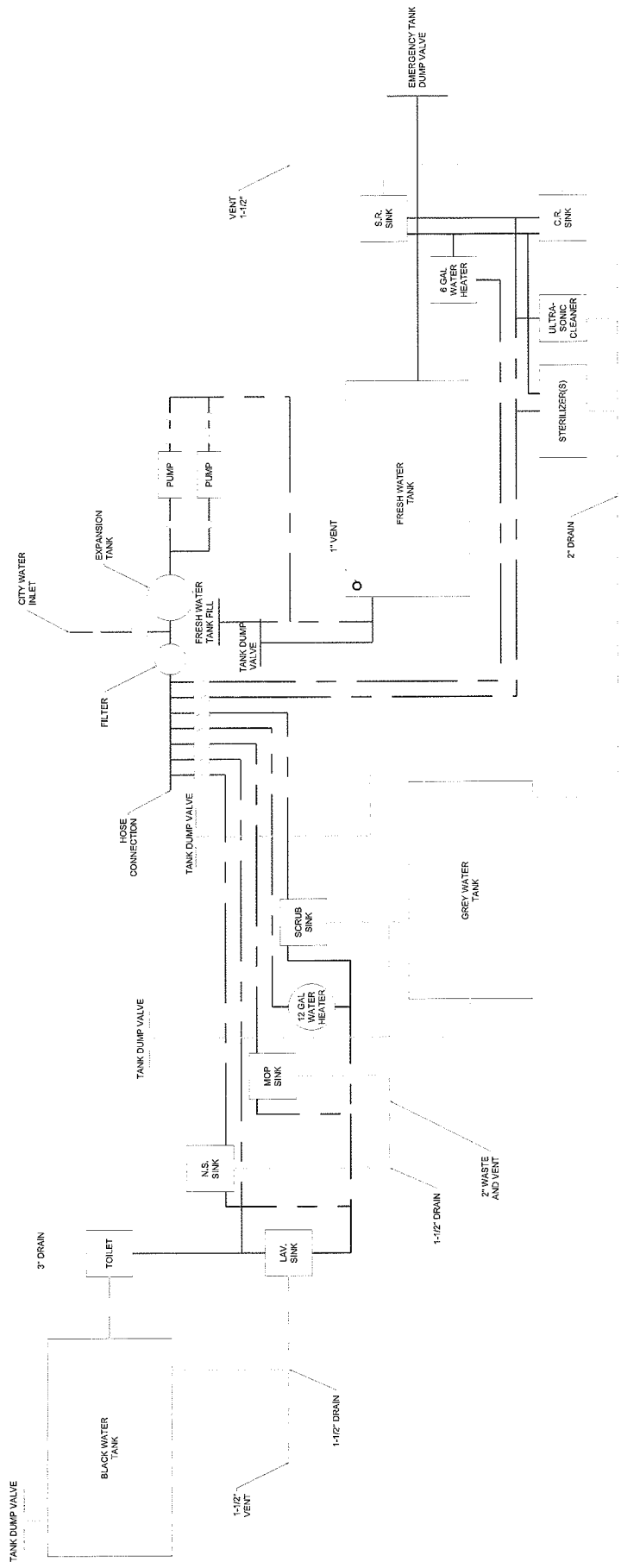
### Plumbing Schematic 1, 1018

RELEASE LEVEL: PROD	REVISION: A
DRAWN BY: JRM	CHANGED BY: TLG
DATE DRAWN: 11/10/2009	SHEET: 1 OF 1
PLATFORM: COM53	MMU TYPE: MSU

THE MATERIAL AND INFORMATION CONTAINED HEREIN IS CONFIDENTIAL AND IS THE PROPERTY OF MOBILE MEDICAL INTERNATIONAL CORP. AND IS NOT TO BE USED, DISCLOSED, COPIED, TRANSFERRED OR REPRODUCED WITHOUT THE PRIOR WRITTEN PERMISSION OF MOBILE MEDICAL.



2176 Portland Street, Suite 4  
 St. Johnsbury, VT 05819  
 www.mobile-medical.com  
 Phone: 1-800-748-2322  
 Fax: 1-802-748-2323  
 Email: mmic@mobile-medical.com



## Plumbing Schematic 2, 1018

THE MATERIAL AND INFORMATION CONTAINED HEREIN IS CONFIDENTIAL AND IS THE PROPERTY OF MOBILE MEDICAL INTERNATIONAL CORP. AND IS NOT TO BE USED, DISCLOSED, COPIED, TRANSFERRED OR REPRODUCED WITHOUT THE PRIOR WRITTEN PERMISSION OF MOBILE MEDICAL.

2176 Portland Street, Suite 4  
 St. Johnsbury, VT 05819  
[www.mobile-medical.com](http://www.mobile-medical.com)  
 Phone: 1-800-748-2322  
 Fax: 1-802-748-2323  
 Email: [mmic@mobile-medical.com](mailto:mmic@mobile-medical.com)



RELEASE LEVEL: PROD	REVISION: A
DRAWN BY: JRM	CHANGED BY: TLG
DATE DRAWN: 11/10/2009	SHEET: 1 OF 1
PLATFORM: COMB3	MMU TYPE: MSU

## **COLD WEATHER TRANSPORT, STORAGE AND AIR LIFT**

1. The three (3) holding tanks need to be drained of fluid.
2. Water pumps need to have plugs removed from the reservoirs and drained with all shut-offs in the “open” position.
3. Expansion tank needs to be drained.
4. There is a drain spigot on the end of the manifold used for draining the pipes and the water heaters. Turn off all shut-offs on the manifold except the water heaters. Then open the spigot on the end of the manifold to drain the water heaters.
5. Remove and drain all traps under five (5) sinks.
6. Remove and drain the canisters on the two (2) humidifiers.
7. Open all shut-offs on manifold and drain all lines.
8. Open all faucets (both hot and cold water).
9. Remove filters from OR Unit in the Clean Utility Room and drain the water from it.
10. Open tank fill and city water connections and leave them open.
11. Remove the water filter from the housing in the belly box, drain and leave off for storage.
12. Remove water from the toilet leaving it completely dry.
13. Disconnect connections on the circulator under the bathroom sink.
14. Disconnect the lines from the mixers under the scrub sink cabinet.
15. Remove water from the sprinkler system (heads and lines).